



GMT MONTHLY MEMBERSHIP PROGRESS REPORT

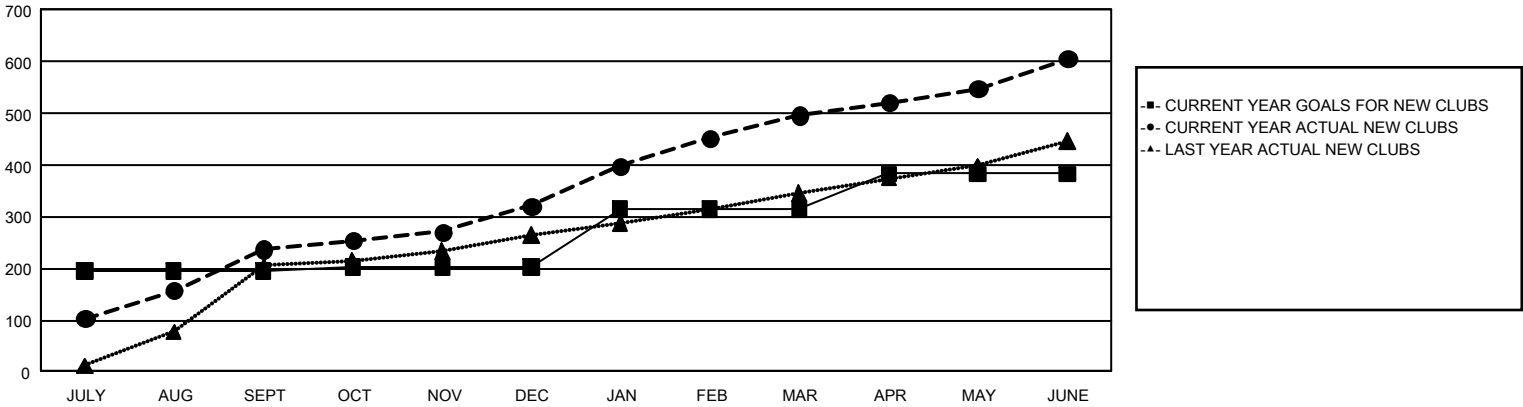
GAT Constitutional Area 6 - South Asia and Middle East

Results as of: 6/30/2025

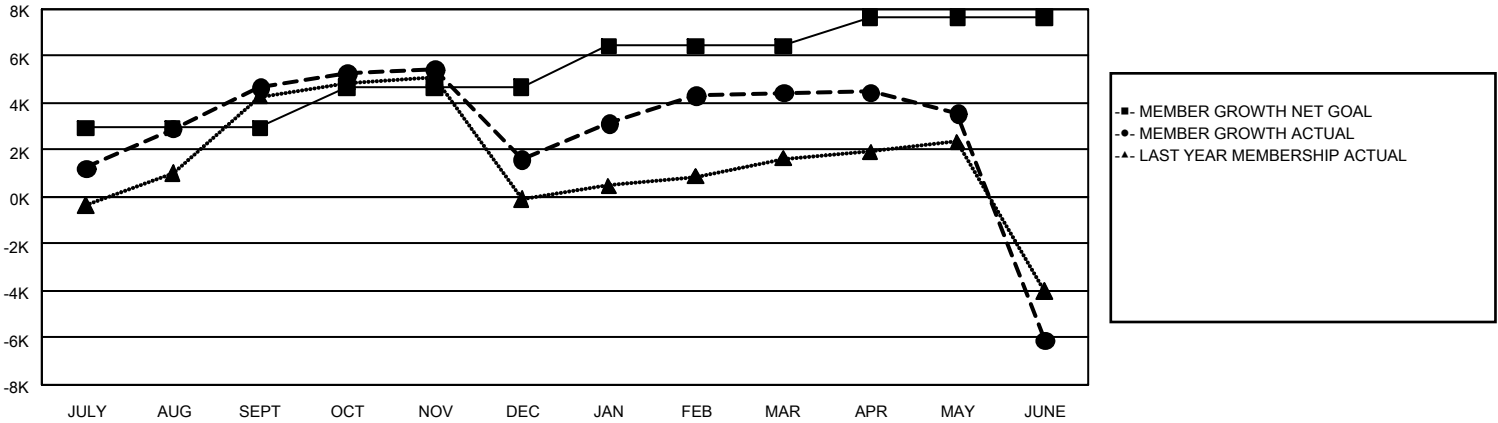
REPORT DOES NOT INCLUDE CLUBS IN UNDISTRICTED AREAS.

Clubs				Members			
RESULTS FOR 2024-2025				RESULTS FOR 2024-2025			
QUARTER	NEW CLUB GOAL	NEW CLUBS	DROPPED CLUBS	QUARTER	MEMBER GROWTH NET GOAL	MEMBER GROWTH ACTUAL	DROPPED MEMBERS ACTUAL (including transfers)
JULY/AUG/SEPT	195	237	57	JULY/AUG/SEPT	2,933	9,801	3,934
OCT/NOV/DEC	7	84	148	OCT/NOV/DEC	1,737	5,324	7,718
JAN/FEB/MAR	113	176	66	JAN/FEB/MAR	1,772	6,785	2,949
APR/MAY/JUNE	68	109	150	APR/MAY/JUNE	1,228	8,297	16,318

GOALS AND ACTUAL NEW CLUBS CUMULATIVE



GOALS AND ACTUAL MEMBERS CUMULATIVE



DROPPED CLUBS: 419		2,543 CLUBS OF 4,438 ADDED 1 OR MORE NEW MEMBERS	<u>GENDER DISTRIBUTION</u>	
			MALE	62,874 (71.68%)
			FEMALE	24,780 (28.25%)
<u>DROPPED MEMBERS</u>		CLICK HERE FOR CUMULATIVE MEMBERSHIP DATA		
DECEASED	148		TOTAL FAMILY UNIT MEMBERS 41,990	
CLUB CANCELLED	7,875			
OTHER	22,747		FAMILY MEMBERS PAYING HALF DUES 28,667	
TOTAL	30,770			